

# ENERGY GRAPHICS, INC.

COMPREHENSIVE EXPLORATION PRODUCTS & SERVICES  
OIL AND GAS DATA, MAPS, REPORTS AND GIS SOFTWARE



- INTELLEX PC
- INTELLEX REPORT
- INTELLEX GIS
- INTELLEX TOUCH
- INTELLEX FOR IPAD
- INTELLEX DATA
- PREMIUM DATA PRODUCTS
- CUSTOM MAPS & DATA SERVICES
- GOM LEASE SALE MAPS

Energy Graphics, Inc. markets comprehensive data reporting, management and mapping tools, plus a suite of proprietary oil and gas exploration databases. A pioneer in the field of oil and gas data GIS, we have been providing the exploration industry with high quality data, software and services since 1979. Landmen, Scouts, Geologists, Geophysicists, and Engineers find our software products to be flexible, responsive tools as well as excellent, reliable information sources.

## FEATURING INTELLEX® SOFTWARE PRODUCTS

INTELLEX Software Products are part of an exploration data, GIS, mapping, and data management system that allows the user to pull together exploration data layers from multiple sources into dynamic reports and map displays in seconds. They run as stand-alone programs and as companion programs to provide data inspection & exports, report generation, GIS, and maps. Data exports to a variety of industry formats.

INTELLEX Exploration System



WHAT CAN  
ENERGY  
GRAPHICS DO  
FOR YOU?

LET US SHOW  
YOU THE  
POSSIBILITIES!

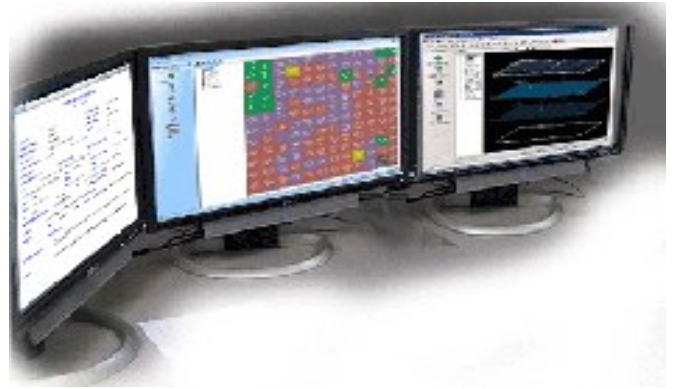


6102 Milwee St., Ste M  
Houston, TX 77092  
USA

Phone: 281-558-2061  
Fax: 281-558-7340  
E-mail: [sales@energygraphics.com](mailto:sales@energygraphics.com)  
Web: [www.energygraphics.com](http://www.energygraphics.com)

# SOFTWARE PRODUCTS

The INTELLEX® Suite of Software Tools allows users to retrieve data using numerous methods and view it in a variety of ways. Users can create a custom map display of multiple data types from multiple sources, then inspect underlying and associated data and generate reports. 3D View provides a 3D map perspective of surface and downhole data such as our proprietary Directional Surveys. The integration of INTELLEX databases means easy access to related data for each data record. Lease and well list reports also provide access to the EG Logs database and integrated log viewer.



*INTELLEX software packages include the proprietary Energy Graphics suite of data to allow users to be productive beginning on day one.*

- *Dynamic Map Displays*
- *Shape File Imports & Exports*
- *Excel Spreadsheet Exports*
- *Multicolor Lease Map Displays*
- *Hand Verified GOM Data*
- *Custom Data Loaders*
- *ArcGIS® Inspection & Reports*
- *Column & Formatted Reports*
- *Free Monthly Data Updates*

# DATA PRODUCTS

## INTELLEX DATA

Comprehensive databases mean more information is available to you from one software tool. INTELLEX software products come complete with the Energy Graphics proprietary suite of data. These databases are continuously updated by our expert Database Managers. Updates to our databases undergo a rigorous QC by our data specialists prior to distribution to INTELLEX clients to assure the most accurate data available.

- *Wells (Federal & State Waters): APDs, Completions, Directionals (BOEM), Logs, Plans, Platforms, Production, Prospects, Scanned Images, Surface & Bottom Hole Locations, Tops*
- *Leases: Locations, Bids, Lessees, Production*
- *Fields: Plays, Pools, Reservoirs, Sands*
- *Pipelines: GOM from as-builts*
- *Culture: GOM Concessions, Fairways, Lease Blocks, Water Depths*

## PREMIUM DATA

*EG Premium Databases include EII Directional Survey Data, Texas State Waters Well Data, and Louisiana State Well Data. These databases are available for license from Energy Graphics at additional cost. Members of OOSA may elect to subscribe to the EG Scout Group to use hand verified data and INTELLEX tools built for the Scout.*

- *EII Proprietary Directional Surveys*
- *Scout Group Wells (requires license)*
- *Texas State Waters Wells*

# PRODUCTION SERVICES

INTELLEX was originally designed as an in-house tool for managing and mapping exploration data for Energy Graphics, Inc. clients. Our **Production Services Department** uses the INTELLEX software suite to inspect data, create maps and maintain databases. Our 30+ years of experience in exploration data management and mapping assures you of working with the highest quality maps, data, and services available.

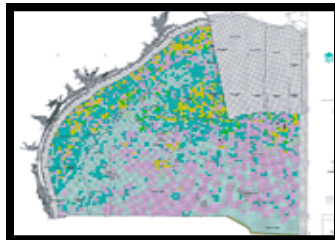
## Some of our available Maps & Services are:

- *Color Lease Maps*
- *Presale Planning Maps*
- *Prospect Maps*
- *Post-Sale Maps*
- *Gulf of Mexico Pipeline Maps*
- *Custom Seismic Coverage Maps*
- *Gulf of Mexico Drilling Maps*
- *Weekly Scout Check Maps\**

(\*Must be a current member of OOSA)

# LEASE SALES

Planning to participate in the next Gulf of Mexico lease sale? Our color lease sale maps exemplify our reputation for accuracy and quality. Order EG Color Pre-sale and Post-Sale Maps ahead of time to be fully prepared.



*Color Lease Maps for Gulf of Mexico Lease Sales*

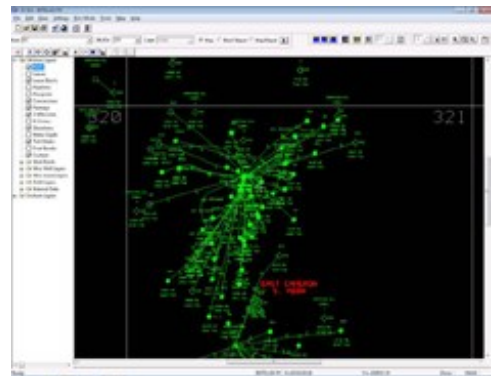
And, if you're an INTELLEX® customer, you'll have access to the INTELLEX Presale data map file for creating your own custom color lease maps for your areas of interest. You can also take your sale data with you to the lease sale on your iPad!

## ENERGY GRAPHICS DIRECTIONAL SURVEYS

**PURCHASE DATA ONLINE**

**ENERGY GRAPHICS IS THE NAME YOU CAN TRUST FOR HIGHEST QUALITY DATA.**

Energy Graphics, Inc. is the exclusive source of Energy Information, Inc. Directional Survey Data covering the Gulf of Mexico. With over 50,000 current wells and new wells added continuously, this database covers the entire Gulf of Mexico. The file is complete with the raw data, true north and/or grid north information.



*Order EG Directional Surveys from the Energy Graphics website, and make sure your next project is based on the most accurate data available.*

## DIRECTIONAL DATA ORDERS

Gulf of Mexico Directional Surveys and Well Location data, along with some associated culture data may be ordered on-line by utilizing our **INTELLEX® WEB** website ordering system. Create a list of the directional surveys you need, then generate an order from your selections.



Energy Graphics, Inc.  
6102 Milwee St., Ste M  
Houston, Texas 77092

Phone: 281-558-2061 Fax: 281-558-7340  
E-mail: [sales@energygraphics.com](mailto:sales@energygraphics.com)  
[www.energygraphics.com](http://www.energygraphics.com)